



7 minutes by Calm

2020 ANNUAL REPORT



Mask On by Zaida

“Poetry is Not a Luxury...it is a vital necessity of our existence. It forms the quality of the light within which we predicate our hopes and dreams toward survival and change, first made into language, then into idea, then into more tangible action. Poetry is the way we help give name to the nameless so it can be thought.”

Audre Lorde, Poetry is Not a Luxury, 1985 (used in RESISTANCE IN HEALING program led by Ammarah Syed)

CREATING AGAINST THE ODDS

7989

Visits

335

New participants

3321

Direct program online
views

690

Young artists in-person
and online workshops,
projects, mentorship,
referrals and resource
distribution

During COVID there have been many different ways of participating at SKETCH, with some in-person participation and lots of on-line participation. Also, there have been many programming differences, with some programs involving multiple visits, others involving a smaller number of visits, and some just one.

OVERALL IMPACT

**Increased Mental Health and
Wellness Increased Connectivity
and Community Increased Skills
and Capacities**



BlacBoiJoi by Ehiko Odeh

We celebrate the tenacious creativity of young poets, artists, storytellers, creators, activists and dreamers who kept us going all through 2020 and who point the way to a better future.

They created strong connections through their songs, writing, dance, videography, photography, sculpture, drawing, painting, zine making, performance art, drag shows, beat making, live streams, DIY activations, classes and projects offered to communities far-and-wide.

Despite the many challenges of the COVID-19 pandemic, despite the amplified realities of racial injustice, and entrenched systemic violence of Anti-Black and Anti-Indigenous racism in particular, despite daily pressures of navigating precarity, instability, and houselessness, social isolation, stigma and the challenges to mental health, these artists shared tools, skills, space, ideas, networks, encouragement, struggles, hope, food, and so much else – to make sure communities of collective care would emerge strong and focused, and we could see our way through to recovery and re-Vision.

We are honoured to play any kind of role in support of these makers who stridently Create Against the Odds.



WHO COMES TO SKETCH

SKETCH engages diverse young people ages 16-29, who navigate the margins, and who come from across Canada, to make radical art that transforms lives and communities.

| PROGRAM | # OF INDIVIDUALS | # OF VISITS |
|---|------------------|-------------|
| Wrap Around Support Programs | 342 | 48 |
| Studio Programs | 731 | 33 |
| Arts Production | 239 | 5 |
| Arts Leadership (includes shared platform leadership) | 211 | 39 |
| Totals | 1523 | 125 |

| GENDER | % OF INDIVIDUAL YOUTH |
|-----------------------|-----------------------|
| Man | 29% |
| Woman | 50% |
| Trans | 13% |
| Two-spirit | 4% |
| Gender Non-conforming | 26% |
| Not Listed | 2% |

| RACE/ETHNICITY | % OF INDIVIDUAL YOUTH |
|---|-----------------------|
| Black- African/Caribbean/ North American | 33% |
| White- European/North American | 27% |
| Indigenous (First Nations/ Inuit/ Metis) | 11% |
| Latinx | 16% |
| Middle Eastern | 6% |
| South-East Asian | 7% |
| South Asian | 9% |
| East Asian | 12% |
| Mixed Heritage (Unspecified) | 10% |
| Indo Caribbean | 2% |
| Not Listed | 1% |

| NEWCOMER/ REFUGEE | % OF INDIVIDUAL YOUTH |
|----------------------------------|-----------------------|
| Identify as Newcomer/ Refugee | 15% |

| EMPLOYMENT | % OF INDIVIDUAL YOUTH |
|---|-----------------------|
| Employed Full-Time | 12% |
| Employed Part-Time | 26% |
| Self-Employed | 21% |
| Not employed | 43% |
| On OW/ ODSP | 26% |
| On Employment Insurance (EI or CERB) | 7% |
| Other | 2% |

| CURRENTLY IN SCHOOLING | % OF INDIVIDUAL YOUTH |
|------------------------|-----------------------|
| Highschool | 5% |
| College/University | 13% |
| Training Program | 5% |
| Not In School/Training | 73% |

| IDENTIFY AS AN ARTIST | % OF INDIVIDUAL YOUTH |
|-----------------------|-----------------------|
| Yes | 89% |
| No | 11% |

These percentages are derived from point in time voluntary demographic information collection. People identify across multiple areas.

ARTS ENGAGE ARTS PRESENTS ARTS LEADERSHIP ARTS WELLNESS

After a Winter season focused on African Liberation, COVID-19 hit and our studios closed.

We scattered to wherever we called home and reached out to as many people as we could to stay connected.

We reshaped our offerings to migrate online.

We conducted tech drives distributing equipment to reduce isolation.

We sorted our one-on-one arts practice mentorship via text, phone, WhatsApp, Instagram, email, in Zoom or Google hangouts.

We shared resources and helps for basic needs and wellness from incredible community partners.

We planned small group arts residencies on themes distributing materials so artists could set up personal 'studios' wherever it was possible, and connect weekly to share learning and exchange ideas.

We curated to artists ready to present work online as a way to ensure their voices were not lost amidst the scramble.

We created posts to share memories and original music

that was being created weekly. We took art into the park and reorganized resource distribution to young people in the community.

We did not stop.

Creativity, Care and Community while considering COVID, fueled our actions and decisions.

“Art has saved me in many ways. Not only is it self-care, but mentally makes me feel free and alive.”

“I need these circles in my life right now”

Quotes shared throughout come from participating artists. Thank you to those who contributed through evaluations, focus groups and interviews.

ARTS ENGAGE

In-Studio January to March
Online April
to December
Most Activities Led by Young People

404

Art makers

91%

Said I have gained
knowledge and/or learned
skills in the arts

84%

Said coming to SKETCH
impacts my overall well-
being positively

89%

Said I feel connected to
myself and I like to know
more about myself

Breathing Medicines by Naty Tremblay

PROGRAMS

Apocalyptic Arts**

It's All the Essentials**

It's all a Drag!**

Project Humanity Drama

Black Visions

Intro to 8 Steps

Young Parents Program**

Resistance in Healing**

Photography: Lights, Action,
Sensor!

Piano Lessons

Right to Dance **

Vocal Revolution **

Culinary Arts

What's Cooking?**

Live Jam

Screen printing

Textiles

Sonic Lab **

Visual Arts

Guitar Lessons

Music Recording

** indicates online programs

Ceramiks: Handbuilding

Lifted by Purpose

Chill N Do Art **

Art in the Park

DJ Arts

Haircutting and Hairstyling w/ Bert**

“Community is the only way to survive and thrive sustainably. Capitalism was made to divide, exhaust resources, and exploit people for cheap labour. Trying to grow as an artist while still having deep community roots is something that is very important to me.”

ARTS PRESENTS

Performance, exhibition, showcase, production residencies,
commissions, artist talks and more

168

Artists

87

Showcased

20,320

Audience
(direct and online)

79%

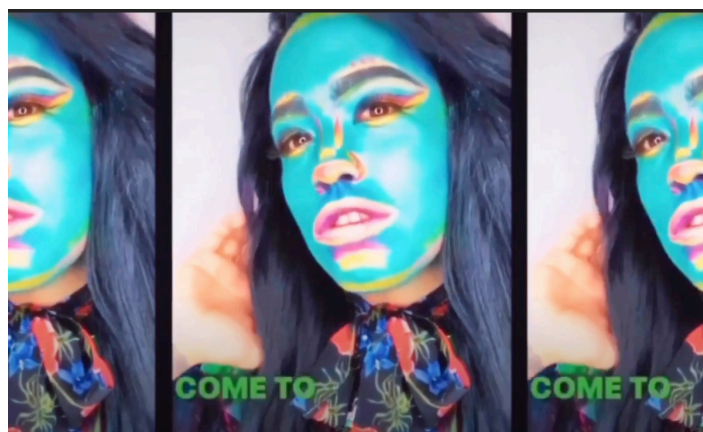
Said I am more confident
in my ability to make an
impact

75%

Said I am more confident
in calling myself an Artist

78%

Said I am exploring and
making art about issues
like power, human rights,
justice, race, class, ability,
gender, sexuality, the
environment, etc.



ART IN PANDEMIC — ONLINE ARTIST SHARES

Courage, perseverance, and process behind artistic practice and process in light of COVID-19

ARTIST LEADERS

Ty Sloane, Pree (Sticky Mangos), Che, Calm, Ashley T., Alia Etienne, Middle, Cilla, Stephanie Bellefleur, Opola Karim, M.C. Cruz, Morgan (Breathtaking Minute), Miss Diamond, Sapphira, Paulina O’Kieffe-Anthony

PEOPLE REACHED ONLINE

30,028



#MUSICMONDAY

Was one of the first curated hashtags we used to highlight the amazing music coming out of the Music program. Featuring these musicians, both current SKETCH artists and alumni.

ARTIST LEADERS

Ben Wood, MOMXWYFE, CH\$NGE (Oddane Taylor), Nomvdslnvd, Balu, Che, Ayrah Taerb, Dynesti, Rosie Monday, Bangerz Brass, Se'lah Genesis, Its Middle, Charmie, Chris AK aka Dyce, Peter Bones, Aaleem Mohammed, Shn Shn, Gehan, Ella Cooper Vocal Jam (Winter Open Studio 2015)

PEOPLE REACHED ONLINE

28,907



WINTER ARTIST SPOTLIGHT INSTAGRAM TAKEOVER

Amazing artists selling art and products online for the holiday season.

ARTIST LEADERS

Uplift Kitchen, Sticky Mangos, Lallafral, Glorious Masks, Stylized as Majesty, MOMXWYFE, Flying Fish FF, Pacha, Arts, Kanna Anigbogu, Breath Taking Minute, Hola Alegrias, Olympia Trypis, Chill N Do Art, Black People's Business

PEOPLE REACHED ONLINE

7,066

find artwork, jewellery,
apparel and more!





Making with Place Production Experiments, photography by Jahmal Nugent

PRODUCTION RESIDENCIES

Artists engaged in 9 small group residencies to explore themes, share work and create final productions or commissions for creative industry partners.

“We can transform the way others in our community see controversial topics. With our creative change we can essentially reach our messages across communities, cities, to other ends of the world through art and what we say in our work or what we speak up about within our community. I love how inclusive and dynamic we are as a group and how strong we are in delivering the social change where it’s needed.”



IT'S ALL THE ESSENTIALS SHOWCASE CYCLE 2

Featured five performers who spent over 20 weeks in 2020 learning the fundamentals of queer performance from 11 established queer performance facilitators. They studied Drag, Burlesque, Make-up & Costuming, and Production, Marketing, Lipsync, Video Production & Editing, POP Performance, and Queer Career Development. They also ventured off into queer nightlife to continue to foster their performance practice. Brought to you by It's All Queer Pride Cycle 2

ARTIST LEADERS

Robin / Rye, Alexi / Kuya Atay, D / Lallafral, Mars Alexander, Mack / Brendon Urethra

Went through the program: Cameron, Rhinestone Chickadee



IT'S ALL A DRAG SHOWCASE

It's All A DRAG! Showcase' featured five new performers who spent six weeks, with nine established queer performance facilitators, and learned the fundamentals of queer performance: Drag, Burlesque, Make-up & Costuming, Production, and more! Watch the debut of these five new performers and bask in their hard-work & queer glory! Brought to you by 'It's All Queer Pride Cycle 3' program.

ARTIST LEADERS

Jay / Rosé Parks, TJ / The Noise Witch, Sydney / Cherrie Era, Elliott / Tinie Tittie Ellie, Elias / Lvcifer

MAKING WITH PLACE

Artist-researchers studied the multiple complexities of place surfacing their intentions for community and culture. Solo practice led to production experiments at Artscape Youngplace, Queen and Abell, Queen and Dufferin Encampment, Dundas Square and The Bentway. Supported in part by SSHRC and York University.

ARTIST LEADERS

Ayrah Taerb, Jess De Vitt, Jahmal Nugent, Bert Whitecrow, Priya “Pree” Rehal, Ammarah Syed, Nigel Edwards, Charlotte Lombardo, Phyllis Novak

PUBLIC ART EXPERIMENTS

11

FEAR RAGE VISION REBOOT

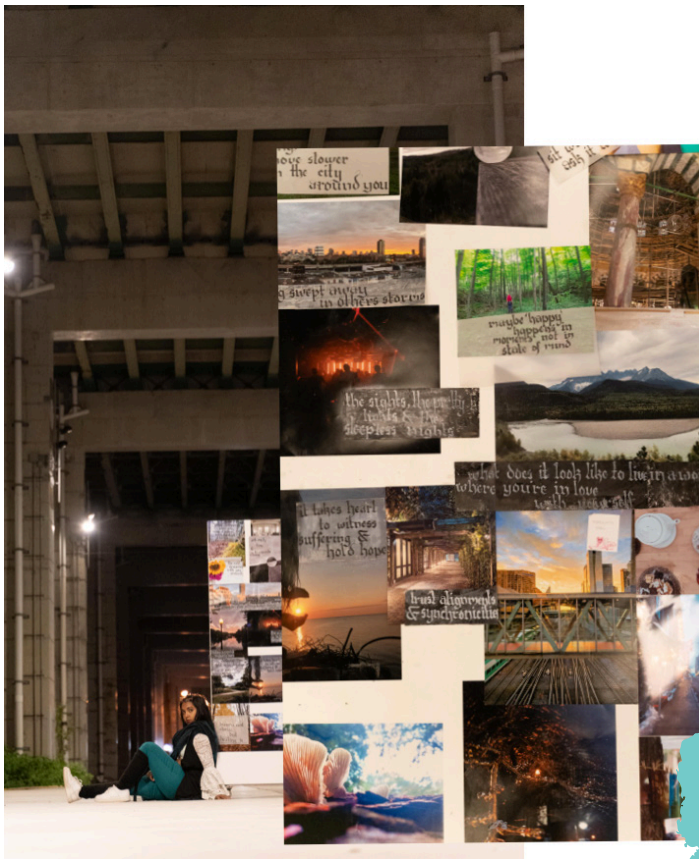
Emerging arts from the digital ethers during a pandemic, this was a multi-disciplinary arts phenomenon moving through the street and on your screens with paintings, music, fashion, video, and performance. Brought to you by the Colide-a-Scope Collective in the Arts and Social Change Residency.

ARTIST LEADERS

Glamma Girl Swag, Aster, Theia, Rosie Monday, Amy, Alisha Zaida, Nicholas Ridiculous, Jules, Its Middle, Xellah

VIEWS ONLINE

600





LINKEDIN MURAL COMMISSION

A MURAL FOR NEW TORONTO OFFICES

LinkedIn approached SKETCH and we used this opportunity to learn the ins and outs of submissions - from development to production to finished work - making the process more accessible. 5 artists submitted and one artist was chosen for a PAID mural commission.

ARTIST LEADERS

Ehiko Odeh, Rowell Soller, Pogi the Artist, Nick Zhurid, Brian Jiang will create this mural in 2021

THE COMMONS

An imagining of ideal futures, and re-imagining of cities, spaces and homes.

In partnership with DesignTO Youth, artists focused on public space and public art for exhibition during DesignTO's 2021 festival at Stackt. Artists used their keen observations and critical analysis regarding public spaces to nurture .

ARTIST LEADERS

Maneesa Veeravel, Sol Amarillo, Lana Yuan, Danielle Tullo, Priya "Pree" Rehal, Aidan Dolan

NEIGHBOURHOOD COFFEE (NC)

SKETCH has developed an ongoing partnership with this new Toronto coffee vendor. Their mission is to highlight the various areas of town that make up Toronto, while platforming as many SKETCH artists possible through marketing. Our first project with them was to do a call out for art that reflects a specific TO neighbourhood which became labels for 2 of their new coffee blends. At the request of NC, we prioritized Black artists in the call for submissions. These artists receive a percentage of sales.

ARTIST LEADERS

Pogi the Artist, Cilla



BYOMASKS

A new, family-run mask-making company, BYOM sought 2 artists to design masks that reflect their feelings surrounding the pandemic while also spreading beauty. For this opportunity, we created an open call suiting the SKETCH community of artists as a whole.

ARTIST LEADERS

Kanna Anigbogu, Morgan Matzelle



ARTS LEADERSHIP

Workshops, mentorship, training, and support

177

Artistic Leaders

17

Artistic Leaders led 29 unique programs'

\$125K

Income to Arts Leaders

146

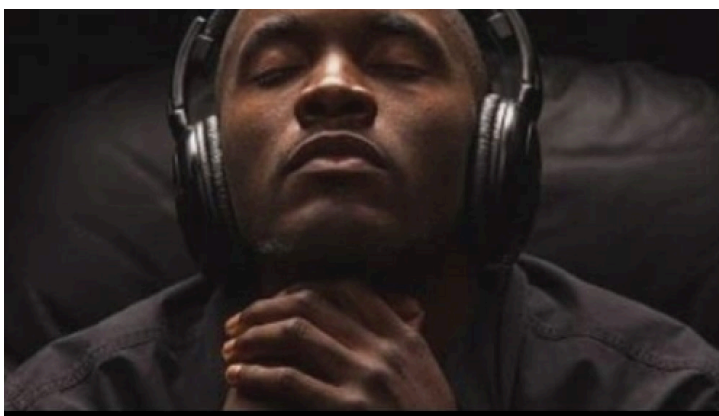
Young artists mentored

1230+

Mentorship hours

24

Artistic Leaders trained in facilitation styles, workshop design, conflict negotiation, transformative justice, providing appropriate referrals, adapting to online programming



FOLIO

A digital platform for SKETCH artists to prepare for creative industry opportunities and access arts career mentorship. Artists create profiles, map goals, collaborate, and access opportunities.

This project is supported by The Digital Strategy Fund of the Canada Council for the Arts

PROFILES

41

SHARED PLATFORM

Arts and culture initiatives that prioritize young people to be leaders in their communities.

16

Initiatives

63

Young leaders on core teams of
shared platform groups

52

Young leaders in direct
mentorship with SKETCH

78,438

People reached overall

590

People reached

\$1,301,720

Total raised by Shared Platforms

WORKSHOPS AND EVENTS ENGAGING THESE COMMUNITIES

| COMMUNITIES ENGAGED | % OF INDIVIDUAL YOUTH |
|-----------------------------------|-----------------------|
| Underhoused and/or homeless youth | 64% |
| LGBTQQ2+ youth | 86% |
| Black youth | 93% |
| Indigenous youth | 64% |
| Newcomer and/or refugee youth | 50% |
| Trans youth | 71% |
| Youth of colour | 93% |
| Youth artists | 86% |
| Youth experiencing poverty | 57% |

87%

Report what they've learned and practiced about financial management helps them feel more confident about planning for the future of their initiative

100%

Report leadership and organizational development skills have increased

These initiatives address systemic barriers and increase access in marginalized communities to equitable opportunities in arts and culture. SKETCH offers charitable governance, fiscal and legal responsibility, mentorship, coaching and support in project development, finance, administration and management.

OUTCOMES

- Young people lead successful initiatives through artistic leadership and organizational development
- Young people increase their financial autonomy through creating management systems and accessing funding to lead their projects



#FOLLOWFRIDAY

A curated hashtag to highlight SKETCH artists, staff, mentees from our Shared Platform as well as community partners.

PEOPLE REACHED

31,096

HIGHLIGHTED

Uplift Kitchen
 Weave and Mend Collective
 NIA Centre for the Arts
 Black Women Film!
 Just Over Music
 Street Voices
 NOOR
 Elevate Equity
 Project: Humanity
 Chef Quina
 Zaida
 Kaya Joan
 ILL NANA DiverseCity Dance Company
 Gehan
 Good Guise
 Alia Ettienne
 Jess De Vitt
 Ehiko Odeh

ARTS WELLNESS



Food, tech, art supplies, referrals

2142

Meals distributed

512

Good Food boxes
distributed in partnership
with FoodShare Toronto

86

Tech support units
distributed

259

Art and harm reduction
supply kits distributed

ADDITIONAL SUPPORTS

Tax Clinics, Trans ID Clinic, Referral Counseling,
Mindfulness Supports, Art-in-the-Park

83%

Said I have learned about
ways to do self-care that
improve my well-being

89%

Said I feel connected to
myself and I like to know
more about myself

76%

Said I have learned some ways to deal with stress,
anxiety, and other issues related to trauma through my
art or other self-care practices at SKETCH

COMMUNITY & CORPORATE ENGAGEMENT

1,365,012

People reached through
our social media channels

This period marked the first time in the history of SKETCH that all efforts at all levels of the organization transitioned completely to an online format. The immediate impacts of the COVID-19 pandemic engaged SKETCH's communication team to implement communications protocols and processes that allowed a smoother, more strategic curation of relevant content on social media platforms using hashtags and campaigns to generate increased audience engagement across all channels.

SKETCH TALKS

Presentations and Dialogue on Hot Topics

SPRING: THE NEW CREATIVE INDUSTRY IN FACE OF COVID-19



Adom
Acheampong
NIA Centre for the Arts



Dynesti
Williams
Entertainer, Music & Money Coach



Scott
Pinkney
Publicis



Paulina
O'Kieffe-Anthony
SKETCH

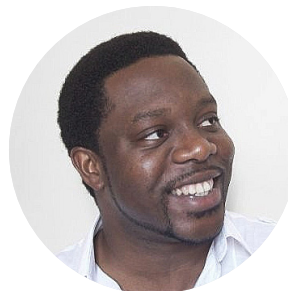
FALL: CREATING EFFECTIVE MENTORSHIPS FOR THE NEXT WAVE OF YOUNG BLACK LEADERS



Earl
Davis
BMO



Nigela
Purboo
Onyx Initiative



Osemelu
Airewele
BDP Quadrangle



Q Kirk
TD

SPACESHARE

Despite studio closures we were fortunate to work with 31 community renters generating \$40,000 toward maintaining the studios



3RD PARTY FUNDRAISERS FOR SKETCH

- University of Toronto
- The Huron Carole Virtual
- Tits and Teeth Podcast

NOURISH FOOD CREATION TEAM BUILDING EVENTS

- Apple
- Ink & Water



BFF

CONTRIBUTING A PORTION OF THEIR PROFITS

- Ink & Water
- Elegantly Angeleta
- BYOM
- Huri Movement
- Neighbourhood Coffee
- Sleepenvie Inc.

ART SALONS

ONLINE ART CONCERTS AND WORKSHOPS

- BDP Quadrangle
- Apple
- Traction
- John Andras
- Charlene Quincey

CORPORATE DONORS

- PayPal Giving Fund Canada
- Ontracks Consulting
- Corby Spirits & Wine LTD
- MIT Solve
- Lorne Mountain Tattoos
- TELUS Friendly Future Foundation
- TD Bank Financial Group
- FORREC Ltd.
- BDP Quadrangle
- Partial Gallery
- Nickel Brook Brewing Co
- Tridel
- ASSOCIUM

REVENUE AND EXPENSES

\$67,426

Surplus

TOTAL REVENUE

\$3,695,938

SKETCH PROPER

\$2,394,218

RAISED BY SHARED
MENTORSHIP PLATFORM GROUPS

\$1,301,720

- 68%** Government Grants
\$2,513,780
- 15%** Foundation Grants
\$550,113
- 03%** Corporate Donations
\$114,959
- 04%** Individuals
\$165,139
- 01%** Social Enterprise
\$30,325
- 05%** Fundraising
\$177,267
- 02%** Other
\$63,845
- 02%** Capital Campaign
\$80,510

TOTAL EXPENSES

\$3,542,227.00

SKETCH PROPER

\$2,240,737.00

EXPENDED BY SHARED
MENTORSHIP PLATFORM GROUPS

\$1,301,490

- 41%** Personnel Costs
\$1,448,793.00
- 06%** Occupancy Costs
\$208,859.00
- 33%** Program Services and Consultants
\$1,162,789.00
- 12%** Purchased Services and Consultants
\$165,139
- 00%** Fundraising
\$30,325
- 04%** Office and General
\$177,267
- 00%** Promotion
\$63,845
- 04%** Interest On Long Term Debt
\$80,510

GENERAL FUND
SURPLUS AT YEAR-END

\$ 153,711

CAPITAL ASSET FUND
(NET AMT)

\$86,285

EXCESS OF REVENUE
OVER EXPENSES 2020

\$ 67,426

Audited Financial Statements available upon request.



PROJECT HOME

Inspired by the creativity in our community, SKETCH launched Project Home: an innovative approach to raise the \$4 million needed through a traditional mortgage, fundraising, and investment in community bonds.

\$1.52M

In capital fundraising

\$1.4M

In community impact bonds

\$1.1M

In a traditional mortgage

SKETCH developed the first ever “Giving Bond” in Canada. Holders of Bond A will invest capital in SKETCH for 5 years, with the option of donating their interest back to SKETCH in return for a charitable income tax receipt.



reVISIONS

Our love and vision of the power of the arts to heal, to bring together, to get us through challenges, to disrupt and to offer imaginative alternatives for more inclusive and just futures, is at the heart of why we are here.



In this time more than ever, because of the state of the world, the pandemic, the climate crisis and the inequities to Indigenous, Black and POC communities and because 2021 is our 25th Birthday, we are reVisioning ourselves as a partner and a platform for **the Next Generation of Young and Diverse Arts Producers, Leaders and Managers, prioritizing increasing our social impact with QTBIPOC* creatives 16-30, who navigate precarity and marginalization.**

Visit www.sketch.ca for more info.

*Queer, Trans, Black, Indigenous, and People of Colour



CHAIR'S MESSAGE

This time last year as I was writing the Chair's message, COVID-19 had not yet affected our day-to-day lives here in Canada. We had heard news about a mystery illness, but we couldn't have imagined the impact it would have on the world. Many of us, including our SKETCH family and supporters, have been deeply affected. We have battled illness, experienced loss of work, and suffered increased anxiety and social isolation. The Arts also have been severely impacted by the pandemic. For almost a year, we haven't stepped foot into a gallery, attended the theatre, or watched a live musical performance. But throughout this pandemic, art at SKETCH continues to be created, relationships and deep bonds keep being formed, and perspectives on what is truly important have shifted, opening our collective consciousness to issues that have long persisted in our world.

We could never have predicted that we would be where we are today - the hardships that this pandemic has created globally are amplified here at SKETCH. These challenging times have led to great creativity and radical art making. My message this year is that not only has SKETCH survived this past year, but that we, as an organization, have thrived. I couldn't be prouder of SKETCH and its continued ability to thrive, create, transform, inform and inspire.

We are looking forward to the day we can once again meet in person. Until then, we thank you for all your support - we are deeply grateful.

Charlene Quincey
President & Chair

COMMUNITY OF SUPPORT

ACADEMIC INSTITUTIONS

York University
George Brown College
Ryerson University
OCADU

ARTS AND CULTURE

ArtReach
Canadian Filmmakers Distribution Centre
Centre for Indigenous Theatre
Charles Street Video
Children's Peace Theatre
Dames Making Games
DesignTO
Good Guise
Kaeja d'Dance
Koffler Gallery
Nia Centre for the Arts
PrideTO
Paper House Studio
Street Voices
Toronto Media Arts Centre
The Bentway
InterAccess
SOCAN
Toronto Arts Council
Unity Charity
Vibe Arts
Weave and Mend Collective

SOCIAL SERVICE, YOUTH ENGAGEMENT, EDUCATION, LAW, HEALTH, EMPLOYMENT

ACCES Employment Youth Job Connections
Blakes Law
Centre for Mindfulness Studies

College Montrose Children's Place
Foodshare Toronto
Fort York Food Bank
Friends of Ruby
Investing in Neighbourhoods, City of Toronto
Justice for Children and Youth
Lifted By Purpose
New Outlook, Central Toronto Youth Services
Ontario Council of Agencies Serving Immigrants
Pieces2Pathways
Planned Parenthood Toronto
ProBono Students Canada
Rosewood Shelter
Second Harvest
St Michael's Hospital
Toronto Youth Partnerships & Employment (TYPE), City of Toronto
TRIP! / Parkdale Queen West Community Health Centre
Uplift Kitchen

GOVERNMENT

Toronto Arts Council
Ontario Arts Council
Canada Council for the Arts
City of Toronto
Government of Canada
Ontario Trillium Foundation

FOUNDATIONS

Community Foundations of Canada
Donner Canadian Foundation
Hal Jackman Foundation

The Slaight Family Foundation
Ontario Trillium Foundation
RBC Foundation
Rotary Club of Toronto
Silicon Valley Community Foundation
The Catherine and Maxwell Meighen Foundation
The Betty Averbach Foundation
The George Cedric Metcalf Foundation
The J.W. McConnell Foundation
The Law Foundation of Ontario
The McLean Foundation
Toronto Arts Foundation
Toronto Foundation

CORPORATE DONORS

Apple
BDP Quadrangle Architects
BYOM
CanadaHelps.org
Corby Spirit & Wine Ltd.
Elegantly Angeleta
FORREC Ltd.
Huri Movement
Ink & Water Tattoo Inc
Neighbourhood Coffee
Nickel Brook Brewing Co
Ontracks Consulting
Partial Gallery
PayPal Giving Fund Canada
Route 504 PR
Sleepenvie Inc
Tattoos Household
University Of Toronto

INDIVIDUAL DONORS (UP TO \$999)

Abigail Cudjoe

Alan Ross

Alan Woods

Alana Perri

Alex Correia

Alexandra MacLean

Alida Stevenson

Alison Parks

Allan Mackay

Amanda De Mello

Amanda Williams

Amelia Merrick

Anastasios Stamadianos

Andre Morriseau

Andrew Francescone

Andrew Selbie

Andrew Swart

Andrew Vijayakumar

Andrew Witkin

Andria Gillis

Angela Emmett

Angelo Colussi

Ann Bisch

Anna Eihenbauma

Anna Gryszkiewicz

Anne Bookbinder

Anne Fleming

Anne LeMesurier

Anne Marie Bianchi

Anne Marson Gaby

Anne Mitchell

Annmarie Ruttimann

Antea Bobeta

Anthea Windsor

Anthony Lipkin

Anthony Nicholson

Anonymous (29)

April Penny

Ardiana Mustafa

Athina Goldberg

Avivah Wargon

Barbara Zee

Benjamin Travers

Betsy Kappel

Bill Worrell

Brandon Hurtado Sandler

Brendan Peters

Brian Bimm

Brian McFarlane

Brian Penner

Bruce Broadbent

Bruce Chapman

Bruce Frazer

Caitrin Pilkington

Cameron McQuaid

Camilo Saenz

Cara A. Westcott

Caroline Robbie

Carolyn Stephenson

Cassandra Baccardax

Catherine Brooks

Catherine Fowler

Catherine Lyons

Catherine May

Cathy Black

Cathy Dyer

Cathy Mann

Cathy Vine

Celia Smith

Charlene Quincey

Charles Rosenberg

Charmaine Stephens

Chris Ferguson

Chris Magwood

Chris Snyder

Christie MacInnes

Christina Bagatavicius

Christina Zeidler

Christopher Lee

Chrystelle Thibault Boyer

Claire McArthur

Claire Nicholls

Clarissa Lewis

Colin Dickie

Cory Boyd

Craig Daniel

Curran Stikuts

Cy Strom

Dale Roy

Daniel Zaiontz

Danielle Boyer

Danny Richmond

Darcy Higgins

Daryl Landau

David & Judy Hyland

David C. Stimpson

David Hetherington

David Hopper

David Reed

David Ryan

David Walsh

Debbie Mann

Debbie O'Rourke

Debbie Wolgelerenter

Deborah Darling

DefSauce.com

Derek Corneil

Devon Elke

Dianne Lawless

Dionne A. Falconer

Donovan Raymond

Edera Bohman

Edith Galinaitis

Eleanor Thomson

Eleanor Walter

Elisse Peltz

Elizabeth Chan

Elizabeth Lecky

Elizabeth Stratton

Emily Piccinin

Emma Bowen

Emre Yurga

Esther Akinrinlola

Eva Hellreich

Evelyn Stewart

| | | |
|--------------------------|--------------------------------|---------------------------------------|
| Fiona Rigby | Julia Wilson | Lorelei Beynon |
| Francesca Mattacchione | Julie Bot | Lori d'Agincourt-Canning |
| Fraser Wiswell | Karen Bergman | Lori DeBakker |
| Gabby Ondrade | Karen Hanson | Lorien Masters |
| Gary Taitt | Karen Ruttimann & Kris Evanoff | Lynn McGowan |
| Gina Tse | Karen Scott | Lynn Montgomery |
| Glenn Bauman | Karen Soper | Lynne Freeman |
| Glenn Smith | Karen Walker | Madalyn Marcus |
| Graeme Billinghurst | Kari Dehli | Madison MacGregor |
| Graham Engel | Kasha Huk | Maggie Quirt |
| Hayung Kim | Kasia Szymanska | Marcielea McDavid |
| Heather & David Crawford | Katherine Rusk | Margaret Pycherek |
| Heather Payne | Katherine Zmetana | Margie Mamor |
| Heather Snell | Kathryn Liedeman | Marie Reid |
| Heather Spratt | Kathy Killinger | Marina Attia |
| Henry Brown | Kathy McKenna | Marjorie Devine |
| Ian Newall | Kathy Moscou | Mark & Janet Cachia |
| Ingrid Bittlingmeyer | Keith Burt | Marnie Sohn |
| Jacki Byrnell | Keith Murley | Martha Burns & Paul Gross |
| Jacqueline Black | Kenneth Andras | Martha Randall |
| Jaime Silverthorn | Kevin Tait | Martha White |
| James Watson-Gaze | Kim Morrison | Mary Elizabeth Luka |
| Jan Schotte | Kira Xue | Mary Usher-Jones |
| Jane Jensen | Kirsten Dressler | Mary-Ann Haney |
| Janet and John Read | Kristine Buerano | Maureen Da Silva |
| Janet Barkhouse-Howard | Kwok Fong Chan | Melissa D'souza Harris |
| Janet Solberg | Larry Fournier | Merylie Houston |
| Jasmine Mousseau | Laura Nixon | Michael Barclay |
| Jennifer Clark | Laura Spratt | Michael Booth |
| Jennifer Law | Laurie Siblock | Michael Cohen |
| Jennifer Lukas | Lawrence Mirkin | Michael & Tara MacTavish |
| Jeremy Boxen | Leanna Crouch | Michael Spatafora |
| Jessica Payne | Leila Siddiqi | Nancy Bell |
| Jessica Poon | Les Babbage | Nancy Howson |
| Joanne Ufkes | Lewis Wynne-Jones | Nancy Johnston |
| John Andras | Lillian Strutt | Nancy Threan-Lorraine & Hugh Lorraine |
| John Bell | Linda MacPherson | Naomi Campbell |
| John Currie | Linzi Manicom | Nicole Chin |
| John & Debbie Deacon | Lisa Donahue | Nicole Hurtubise |
| Jonathan Rengifo | Lisa Kruger | Nicole Kallmeyer |
| Judith Hodgson | Lisa Ross | Niki Landau |
| Julia Reiter | Lo Bil | Nina Bombier |

Nina Richmond
 Olivia Chow
 Omer Riza
 Patrick Hughes
 Paul Isaac
 Paul Kralik
 Paul Truelove
 Paulina O’Kieffe Anthony
 Pegah Kargar
 Peggy Shultz
 Philip Schmidt
 Prince Kumar
 Rachel Butler
 Rachel Kahn
 Ralph Dopping
 Randy Burke
 Raquel Kirk
 Raymond McNeil
 Rich Weller
 Richard Earle
 Richard Park
 Rignam Wangkhang
 Rob Sandolowich
 Robert Durocher
 Robert Lisser
 Robert Molenda
 Roger Greenwald
 Rosemary Oliver
 Rupert Kindersley
 Russ Wooldridge
 Sally Martin
 Sally Vickers
 Sam Migliazza
 Samantha Hill
 Sarah Gaikwad
 Sasha Lampert
 Savorn Kim
 Shân Gordon
 Shari Golberg
 Six Shooter Records
 Sofia Mikhaylova
 Sonia Tagari

Sonja Greckol
 Sophia Papandreou
 Steen Starr
 Sue Cooperstock
 Sue-Jane Sang
 Susan Bate
 Susan Whelehan
 Suzanne Duncan
 Tassia Rakkas
 Terry Wray
 Tim Montgomery
 Timothy Franklin
 Timothy Gordon
 Toan Klein
 Tom Anthes
 Tom Goun Keung Wong
 Tony Farebrother
 Tracy Kyncl
 Uta Nowakowski
 Valerie Jacobs
 Veronika Hurnik
 Vicky Brook
 Virginia Froman-Wenban
 Walter Ross
 Wendy Freeman
 Wendy Johnson
 Wendy White
 Zis Parras

MIDDLE DONORS (\$1000-\$4999)

Ana Yuristy
 Anonymous (2)
 Chris D’lorio
 Emmanuelle Drewitt
 Goodwin Gibson
 Ian Smith
 Magdalena Selma
 Marsha Copp
 Paul Meehan
 Richard Jardim
 Ron & Elizabeth Montgomery
 Ruth Mandel

Shawn Kimel
 Suzanne de Lint

MAJOR DONORS (\$5000+)

Anonymous (2)
 Christopher Southam
 Diane Blake & Stephen Smith
 James Chalmers & Laura Richard
 Maria C. Martin-Stanley
 Mary d’Eon & Mark Eaton

CAPITAL CAMPAIGN

Aleta Shiff
 Alia Abaya-Mannell
 Andrew Burgess
 Anonymous (4)
 Athina Goldberg
 Australian Boot Company
 CD Capital Developments Ltd.
 Charlene Quincey
 Christopher Bury
 Chris D’lorio
 Christopher Southam
 Claire Hopkinson
 Community Counts Foundation
 Elina Surkova
 Elizabeth Staples
 Hayley Diamond
 Jake Hirsch-Allen
 Jane Ball
 Janet Rabovsky
 Jamey & Lynn Hubbs
 Jessica Zimmer
 John & Myrna Daniels Charitable
 Foundation
 Karen Ruttimann & Kris Evanoff
 Kiki Greene
 Kingfisher Foundation
 The Lewis Cohen Foundation
 Lisa Taylor
 Kumail Karimjee
 Mackie Research Capital

Magdalena Selma
 Mark Eaton & Mary d'Eon
 Marie Moliner
 Matthew Broadbent
 Mavi Developments
 Mitchell Cohen
 Moez & Marissa Kassam Foundation
 Nikki Cajucom
 Ottawa Community Foundation
 Phil Obendorf
 Roy Sawyer
 Ruth Mandel
 The Emmet Foundation
 The Love Foundation
 The Merryweather Fund
 Tony Chapman Reactions
 UJA Federation of Greater Toronto
 Upkar Arora
 Wendy Brodikin
 Wendy Paroyan

Parker Dirks
 Studio Tech

RESOURCE DEVELOPMENT & MARKETING

Paulina O’Kieffe-Anthony
 Resource Development & Marketing Manager

Jonsaba Jabbi
 Communications & Content Specialist

Dale Roy
 Resource Development and Marketing Associate

Caprice Duncan
 Resource Development Assistant

Jacqueline Black
 Resource Development Administrator

Emma Bowen
 Executive Projects Specialist

FINANCE

Loredana LaCaprara
 Financial Manager

Luigi Umali
 Financial Associate

Jahmal Nugent
 Media Arts Associate Artist

Jane Doe Smith
 Music Associate Artist

Jess DeVitt
 Visual Art Associate Artist

Ty Sloane
 Performance Arts Associate Artist

Ezekiel Hersi
 Culinary Arts Associate Artist

CONTRACTS

Allie Harvey
 Database Administrator

Michael Frasier
 Grant Writer

Robert Moher
 Grant Writer

Gloria Ghabeli
 Culinary Arts Associate Artist

THE SKETCH CREATIVE TEAM

DIRECTORS

Rudy Ruttimann
 Executive Director

Phyllis Novak
 Artistic Director

Rose Gutierrez
 Program Director

OPERATIONS

Martin Quilaneta
 Operations Manager to Feb. 2020

David Osubronie
 Facilities & Operations Manager, as of Mar. 2020

Antonia Lawrence
 Operations Administrator

Sevi Beaumont
 Admin Hub Host

Jonathan Michaylow
 Operations Assistant

Ben Wood
 Rental Host

PROGRAM

Sonya Reynolds
 Program Manager

Julian Diego
 Program Coordinator

Michael O’Connell
 Program Coordinator

Myia Davar
 Mentorship Platform Coordinator

Naty Tremblay
 Program Coordinator

Sue Cohen
 Program Coordinator

Alanna Fennell
 Evaluation Associate

Sarah Couture McPhail
 Indie Studio Specialist

Quinatzin Aguilar Gutierrez
 Culinary Arts Specialist

Lydia Hernandez
 Program Host

GUEST ARTISTS

Alia Ettienne
 Ammarah Syed
 Ashlee Warchild
 Ashley King
 Babia Majora
 Balu Kanagalingam
 Beerus Junior
 Ben Wood
 Bert Whitecrow
 Bom Bae
 Charlotte Lombardo
 Chill N Do Art
 Chrisann Hessing
 Christian Tarsitano
 David Yu
 Dynesti Williams
 Ekow Nimako
 Gehan Udayanga Kolamba Tantrege
 Halal Bae
 Ill Nana/Diverse City Dance Company

Illo Brown
Inner Being Music Development
Jord Camp
Kage Wolfe
Kamika Peters
Kazmy Chi Muñoz
Keziah Meyers
Kim Ninkuru
Kleo
Lifted By Purpose
Lisa Valencia
Lord Akuna
Luna Dubois
MOM x WYFE
Max Q Lynne
Mink Sook Lee
Newfoundlad
Nigel Edwards
Ocean Giovanni
Olive Grey
Olympia Trypis
Parker Dirks
Pree Rehal
Project Humanity
Qaptain
Rosa Mindreau
Samay Arcentales Cajas
Sherien Barsoum
Usman Khan

VOLUNTEERS

Anoosha Reddy
Danielle Worrall
Dillon Baldassero
Eric Petitti
Gabrielle Charron-Meritt
Jaison Randall
Jenny Laiwint
Kalli Lang
Katie Plaizer
Kelita Braithwaite
Max Tepper

Maxime Crawford-Holland
Meggan Winsley
Taylor Doria
Tedde Rae Albertson

PRO-BONO CONSULTANTS

Susan Crocke
CM

Shadi Mogadime
President, Lead Consultant, 3P Marketing4Profits

Michael Sacke
Impact Investor & Social Finance Professional

W. Clayton Rowe
Senior Partner, The Saben Group

PLACEMENTS

Ariel Elofer
Kazer Dan Balonzo
Lee
Lisa Terry
Molly McGregor
Nika Smith
Tyrone Asombrado

BOARD OF DIRECTORS

Charlene Quincey, Chair/President
Ana Yuristy, Vice-Chair
Sven Dedic, Treasurer
Kira Xue, Secretary
Rona Abramovitch
Magdalena Selma
Esther Akinrinlola
Michael Cohen
Sarah Gaikwad
Marina Attia
Nicole Kallmeyer
Jasmine Mousseau
Jill Fagan



